

LEYARD

FIXED

OUTDOOR FIXED
LED DISPLAY

LA SERIES

LA04S / LA06S / LA10S



LEYARD LA SERIES

Leyard LA is the latest generation of Leyard outdoor fixed installation LED display cabinet, it uses a new aluminum profile for the light, thin structure of the cabinet.



APPLICATIONS

Commercial Street
Shopping Mall
Office Building
Sports Events
Train Station
Pedestrian Street
Subway Station
Central Park
.....



OUTDOOR FIXED LED DISPLAY

HIGHLIGHT FEATURES

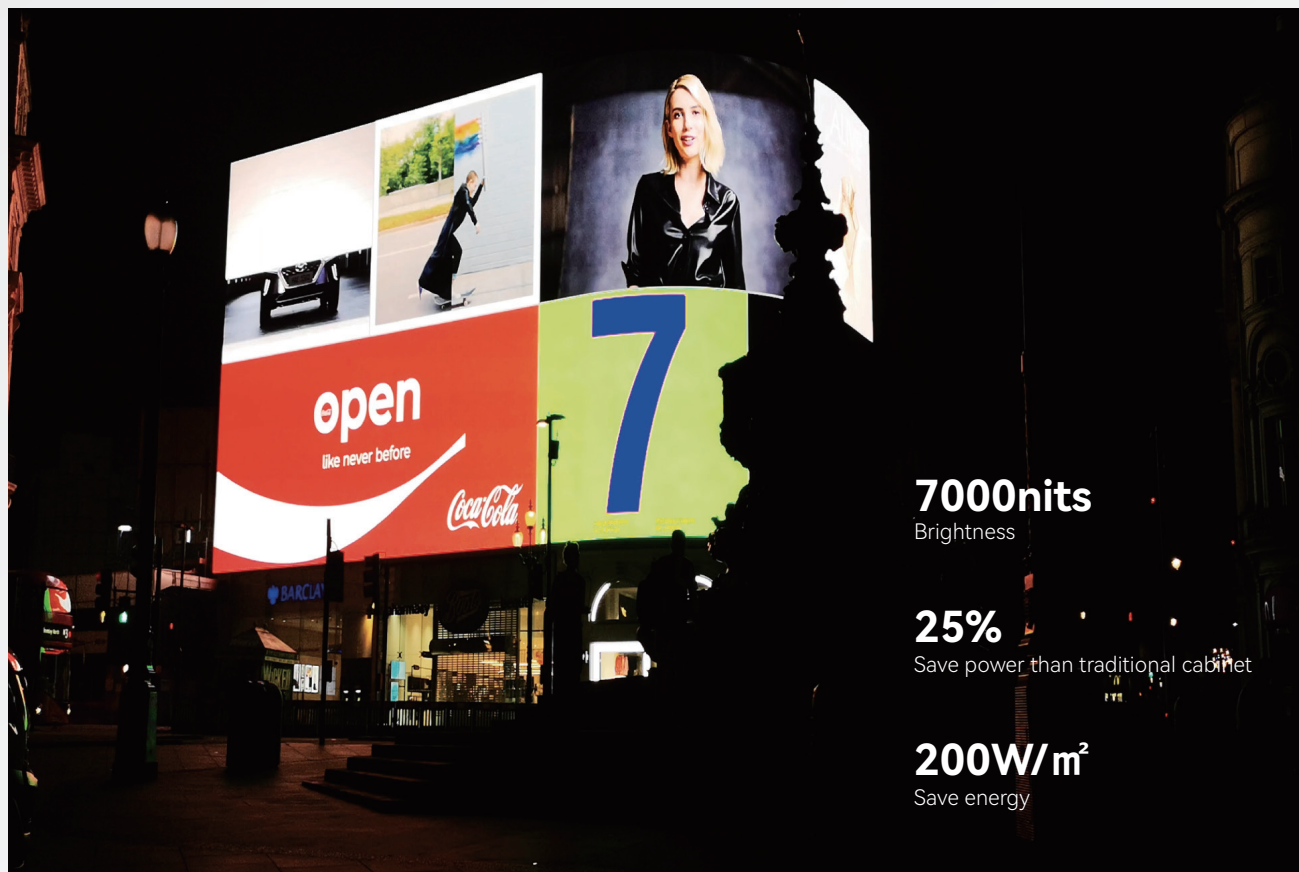
- > Widely applications
- > Ultra-slim and ultra-light
- > 100% front or back maintenance
- > Front side installation
- > Brightness up to 7000nits
- > All weather proof



HIGH BRIGHTNESS

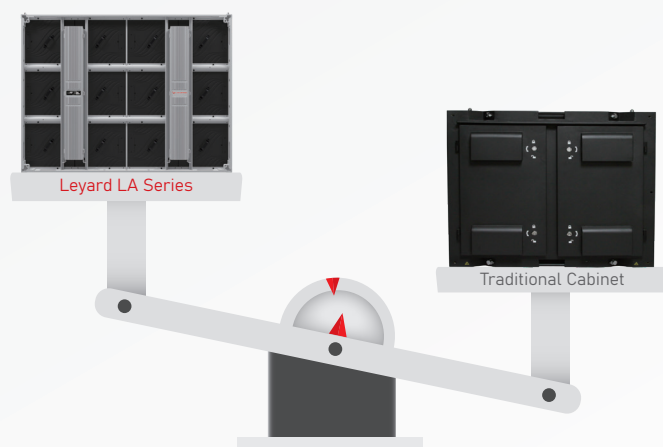
The high brightness outdoor display ensures vivid and clear images quality even in the bright sunlight and fits both day and night.

- > Brightness up to 7000nits;
- > Lower power consumption, take LA10S as an example, it saves 25% power than traditional cabinet, average power is only 200W/m².



ULTRA-SLIM AND ULTRA-LIGHT

Compared with traditional fixed LED displays, sprinter with aluminum panel is of good precision and hardness and permits a reduction 54% in thickness and 42% in weight, which greatly improves operation, and labor saving.



28Kg/sqm
Ultra-light

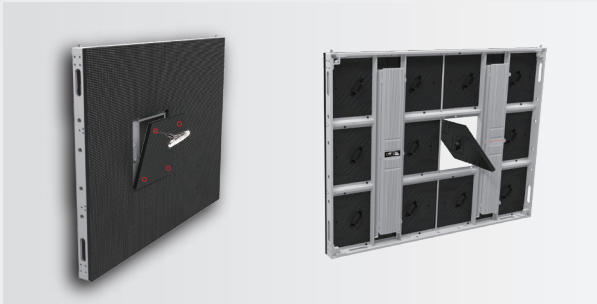
71mm
Ultra-slim

54% Thinner
Than traditional cabinet

42% Lighter
Than traditional cabinet

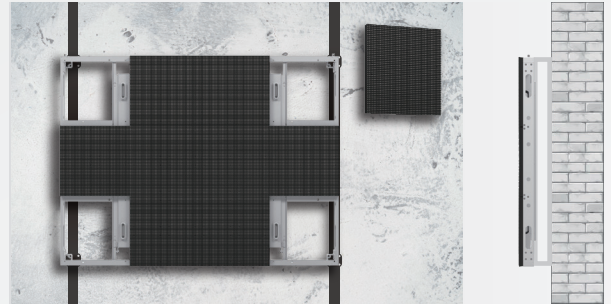
100% FRONT OR BACK MAINTENANCE

Single power control box is designed for fast, simple and efficient maintenance, comparing with the traditional power control box with several doors, more flexible and faster.



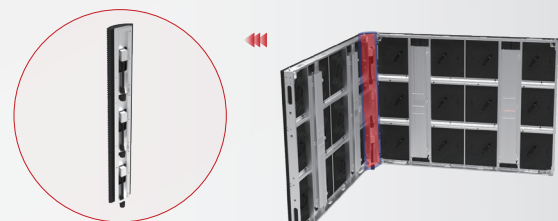
FRONT SIDE INSTALLATION

The display can be installed close to the wall to spare space, which can fit in multiple installation conditions.

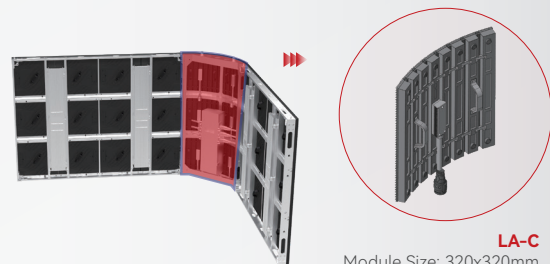


STANDARD CURVED CABINET

Curved cabinets can be used for large outdoor naked-eye 3D LED screen projects.



LA-R
Module Size: 160x320mm



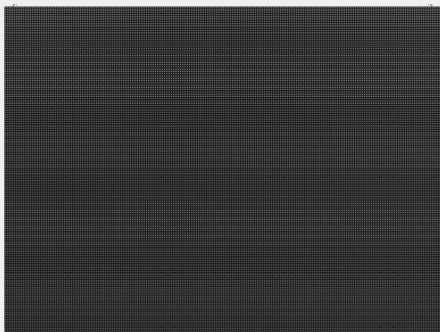
LA-C
Module Size: 320x320mm
MIN R410mm

ALL WEATHER PROOF

- > Low temperature resistant design, working temperature is -30°C – 60°C .
- > No need any AC, saving your operation cost.
- > Double waterproof design, both cabinet and module are waterproof, the waterproof rating is IP65/ IP65.



SPECIFICATIONS



Item	LA04S	LA06S	LA10S
LED Configuration	SMD	SMD	SMD
Physical Pixel Pitch (mm)	4.44	6.67	10
Module Resolution (WxH)	72x72	48x48	32x32
Module Dimension (WxH, mm)	320x320	320x320	320x320
Module Composition (WxH)	Standard: 4x3	Standard: 4x3	Standard: 4x3
Cabinet Resolution (WxH)	288x216	192x144	128x96
Cabinet Dimension (WxHxD, mm)	Standard: 1280x960x71 (Optional: 1280X640 / 640X960 / 640X640)		
Cabinet Area (㎡)	Standard: 1.2288	Standard: 1.2288	Standard: 1.2288
Weight (kg/cabinet; kg/㎡)	35; 28	35; 28	35; 28
Pixel Density (Point/㎡)	50625	22500	10000
IP Level	IP65 Front/Rear	IP65 Front/Rear	IP65 Front/Rear
Brightness (nits)	6000	7500	7500
Color Temperature (K)	3000—10000	3000—10000	3000—10000
Viewing Angle (horiz; vert) °	150; 110	150; 110	150; 110
Deviation of LED Luminance Center (after calibration)	<3%	<3%	<3%
Contrast Ratio	6000:1	6000:1	6000:1
Power Consumption(max; avg) (W/㎡)	720; 240	790; 265	790; 265
Input Voltage (V)	AC100~240V (50~60Hz)	AC100~240V (50~60Hz)	AC100~240V (50~60Hz)
Installation	Front/Rear	Front/Rear	Front/Rear
Maintenance	Front/Rear access	Front/Rear access	Front/Rear access
Refresh Rate @60Hz	≥3840	≥3840	≥3840
Frame Rate Processing (Hz)	50&60	50&60	50&60
Operating Temperature (°C)	-30—50	-30—50	-30—50
Storage Temperature (°C)	-40—60	-40—60	-40—60
Operating Humidity (RH)	10 - 90%	10 - 90%	10 - 90%
Storage Humidity (RH)	10 - 80%	10 - 80%	10 - 80%

Remark: Above data is subject to change without prior notice



LEYARD HONG KONG INTERNATIONAL CO., LIMITED

ADD: Leyard LED South Industry Park, No.6, Guanhe Road, Guanlan, Longhua District, Shenzhen, China

Tel: +86-755-2819-7999 | Email: intlmarketing@leyard.com | Website: sz.leyard.com